

# LEASE



## 530 N. ELAM AVENUE GREENSBORO, NC

### MEDICAL OFFICE BUILDING

2,485 SQUARE FEET ± AVAILABLE  
- FORMER LASER EYE SURGERY CENTER

### CONVENIENT LOCATION SURROUNDED BY PROFESSIONAL MEDICAL OFFICES

- ADJACENT TO WESLEY LONG HOSPITAL
- MINUTES TO MOSES CONE HOSPITAL  
AND THE FRIENDLY SHOPPING CENTER

### FLEXIBLE FLOOR PLAN

- SEVERAL EXAM ROOMS WITH SINKS

### EXCELLENT VISIBILITY

- PYLON STREET SIGNAGE
- BUILDING SIGNAGE
- GREAT EXTERIOR LIGHTING

### ATTRACTIVE LEASE RATES

### CALL FOR DETAILS



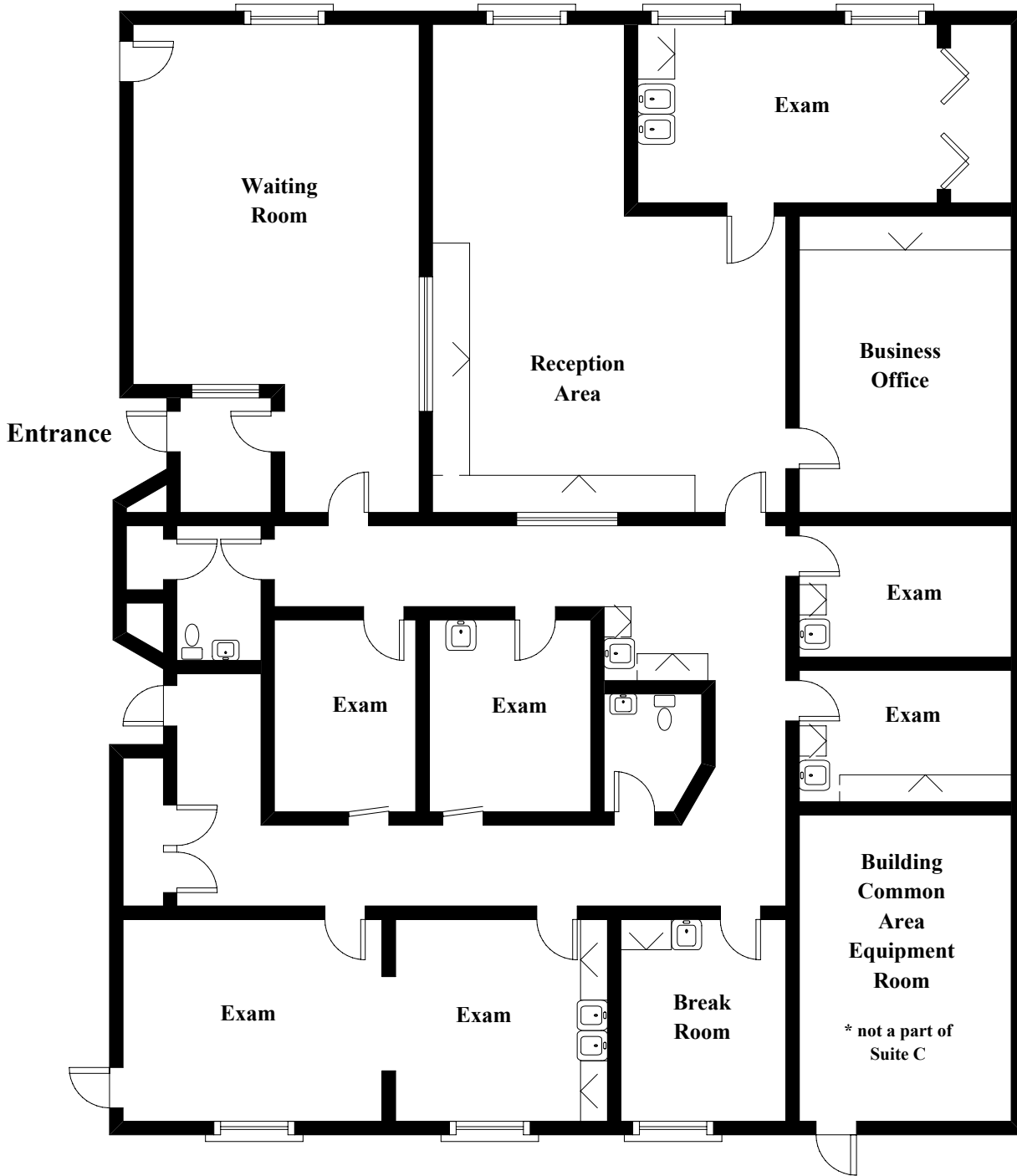
**445 DOLLEY MADISON ROAD / SUITE 400 / GREENSBORO, NC 27410 / 336-297-1000**  
**WWW.ESSAINC.COM**

ALL INFORMATION PROVIDED HEREIN IS FROM SOURCES PRESUMED TO BE RELIABLE; HOWEVER, NO WARRANTY OR REPRESENTATION IS MADE AS TO THE ACCURACY THEREOF, AND THE INFORMATION PROVIDED IS SUBJECT TO ERRORS, OMISSIONS, CHANGE OF PRICE, RENTAL OR OTHER CONDITIONS, PRIOR SALE, LEASE OR FINANCING OR WITHDRAWAL WITHOUT NOTICE. NO LIABILITY OF ANY KIND IS TO BE IMPOSED ON ESSA COMMERCIAL REAL ESTATE. IT IS YOUR RESPONSIBILITY TO INDEPENDENTLY CONFIRM ITS ACCURACY AND COMPLETENESS. ANY PROJECTIONS, OPINIONS, ASSUMPTIONS OR ESTIMATES USED ARE FOR EXAMPLE ONLY AND DO NOT REPRESENT THE CURRENT OR FUTURE PERFORMANCE OF THE INVESTIGATION OF THE PROPERTY. THE VALUE OF THIS TRANSACTION TO YOU DEPENDS ON TAX AND OTHER FACTORS WHICH SHOULD BE EVALUATED BY YOUR TAX, FINANCIAL, ENVIRONMENTAL, AND LEGAL ADVISORS. YOU AND YOUR ADVISORS SHOULD CONDUCT A CAREFUL, INDEPENDENT INVESTIGATION OF THE PROPERTY TO DETERMINE TO YOUR SATISFACTION THE SUITABILITY OF THE PROPERTY FOR YOUR NEEDS.

# 530-C North Elam Avenue

## Floor Plan

2,485 RSF +/-





**N. ELAM AVE**

