

LAND FOR SALE



405 S. GREENE STREET GREENSBORO, NC

APPROXIMATELY 0.23 AC ±

ZONED COMMERCIAL (CENTRAL BUSINESS)

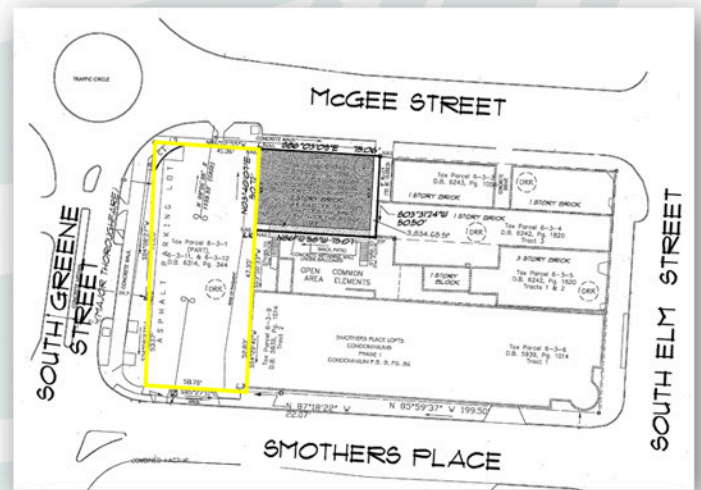
EXCELLENT CORNER LOCATION

GROWING AREA DOWNTOWN

SURROUNDED BY OFFICE, RETAIL, AND
RESIDENTIAL PROPERTIES

AGGRESSIVE SALE PRICE

CALL OR EMAIL FOR DETAILS



445 DOLLEY MADISON ROAD / SUITE 400 / GREENSBORO, NC 27410 / 336-297-1000
WWW.ESSAINC.COM / CARL@ESSAINC.COM

ALL INFORMATION PROVIDED HEREIN IS FROM SOURCES PRESUMED TO BE RELIABLE; HOWEVER, NO WARRANTY OR REPRESENTATION IS MADE AS TO THE ACCURACY THEREOF, AND THE INFORMATION PROVIDED IS SUBJECT TO ERRORS, OMISSIONS, CHANGE OF PRICE, RENTAL OR OTHER CONDITIONS, PRIOR SALE, LEASE OR FINANCING OR WITHDRAWAL WITHOUT NOTICE. NO LIABILITY OF ANY KIND IS TO BE IMPOSED ON ESSA COMMERCIAL REAL ESTATE. IT IS YOUR RESPONSIBILITY TO INDEPENDENTLY CONFIRM ITS ACCURACY AND COMPLETENESS. ANY PROJECTIONS, OPINIONS, ASSUMPTIONS OR ESTIMATES USED ARE FOR EXAMPLE ONLY AND DO NOT REPRESENT THE CURRENT OR FUTURE PERFORMANCE OF THE INVESTIGATION OF THE PROPERTY. THE VALUE OF THIS TRANSACTION TO YOU DEPENDS ON TAX AND OTHER FACTORS WHICH SHOULD BE EVALUATED BY YOUR TAX, FINANCIAL, ENVIRONMENTAL, AND LEGAL ADVISORS. YOU AND YOUR ADVISORS SHOULD CONDUCT A CAREFUL, INDEPENDENT INVESTIGATION OF THE PROPERTY TO DETERMINE TO YOUR SATISFACTION THE SUITABILITY OF THE PROPERTY FOR YOUR NEEDS.



W. WASHINGTON ST.

**CAROLINA
THEATRE**

**S.
GREENE
ST.**

**S.
ELM
ST.**

**S.
DAVIE
ST.**

**NEW
5-STORY OFFICE
BUILDING & BIN 33
RESTAURANT**

**THE LOFTS
AT
GREENSBOROUGH
COURT**

**M'COUL'S
PUBLIC
HOUSE**

**NATTY
GREENE'S
PUB &
BREWING CO.**

W. MCGEE ST.



405

**SMOTHERS
PLACE
LOFTS**

SMOTHERS PL.

